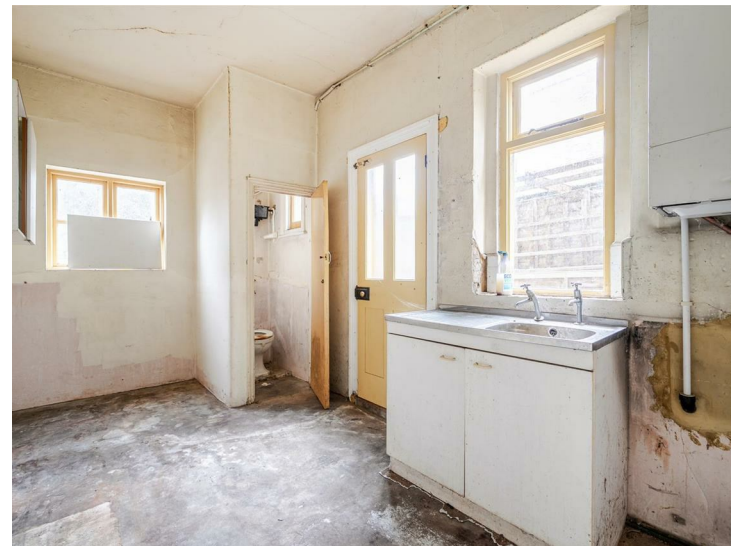


Woodside Green, London, SE25 5EW



Offers In Excess Of £750,000

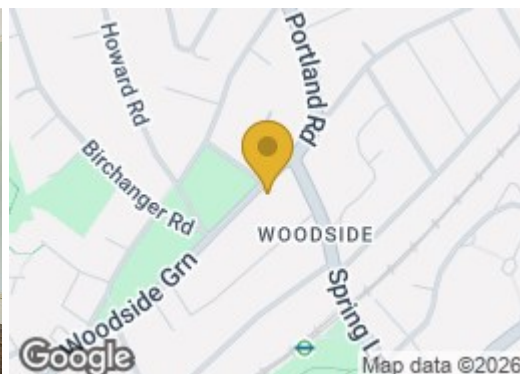
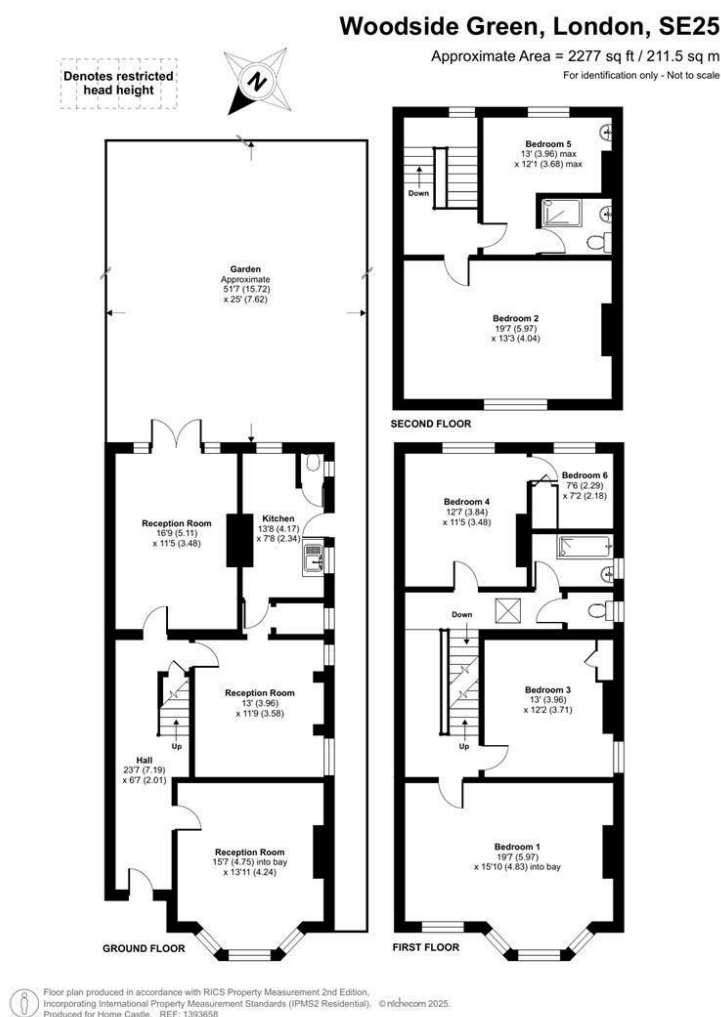


House - Semi-Detached

- Victorian Style Semi Detached Family House
- Five - Six Bedrooms
- Offers Opportunity and Potential
- Does require modernisation throughout
- Near to Norwood Junction BR/Overground Station
- Three Reception rooms
- Looking Over Woodside Green
- Character Features
- Has been in the same family occupation for nearly 100 years!
- Must be viewed internally to be appreciated

Woodside Green, London, SE25 5EW

Step into a rare opportunity to acquire this impressive Victorian-style semi-detached home, cherished by the same family for almost 100 years. Bursting with character and brimming with potential, this substantial property is arranged over three generous levels and offers a fantastic canvas for transformation. The ground floor boasts three spacious reception rooms and a family kitchen, all enhanced by striking bay windows and original feature fireplaces that echo the home's historic charm. The first floor provides four well-proportioned bedrooms, including a principal bedroom with a bay window, alongside a family bathroom and separate WC. The top floor reveals two further bedrooms and a shower room, ideal for growing families or flexible living. Outside, a rear garden in need of landscaping. Vacant and offered with no onward chain, this remarkable property presents an exciting opportunity to create a stunning family residence or, subject to the appropriate planning consents, a potential development project. Early viewing is strongly advised to truly appreciate the scale and possibilities on offer.



Whilst you are at liberty to use any firm of solicitors of your choice, Homecastle can, if requested, recommend solicitors.

If you choose Cook Taylor Woodhouse solicitors from our list, Homecastle will receive a £150 referral voucher.

If you require clarification on any point please contact us particularly if travelling some distance to view. All services appliances, fittings and central heating etc (if applicable) have not been tested by our company. Measurements are taken by laser tape to the widest point of the room, are approximate and may be subject to a margin of error. Lease, ground rent, maintenance and garden details (if applicable) cannot at present be relied upon as being correct. We are awaiting clarification from the vendor's solicitors. The description of this property is only the opinion of our Company.